



*Welcome to Seaforth Land's regular series of newsletters, where we will continue to update you on our construction plans for Space House (One Kemble Street and 43-59 Kingsway).*

## IN THIS NEWSLETTER YOU WILL FIND AN UPDATE ON:



Our construction programme



Upcoming works



Our Traffic Management Plan

### PROJECT UPDATE:

Following consultation with the local community, Camden Council has approved our Construction Management Plan (CMP).

The CMP outlines how we will ensure that the construction works will be managed safely and to the highest standards.

### YOU CAN DOWNLOAD THE CMP FROM OUR WEBSITE:

[spacehouseproposals.co.uk](https://spacehouseproposals.co.uk)

0800 307 7965

[spacehouse@londoncommunications.co.uk](mailto:spacehouse@londoncommunications.co.uk)



# OUTLINE CONSTRUCTION PROGRAMME

- ◆ Enabling and early demolition works  
**January to Autumn 2021**



- ◆ Main construction works  
**Autumn 2021 to Spring 2023**



- ◆ Works completed  
**Spring 2023**

## UPCOMING ACTIVITY: SPRING 2021

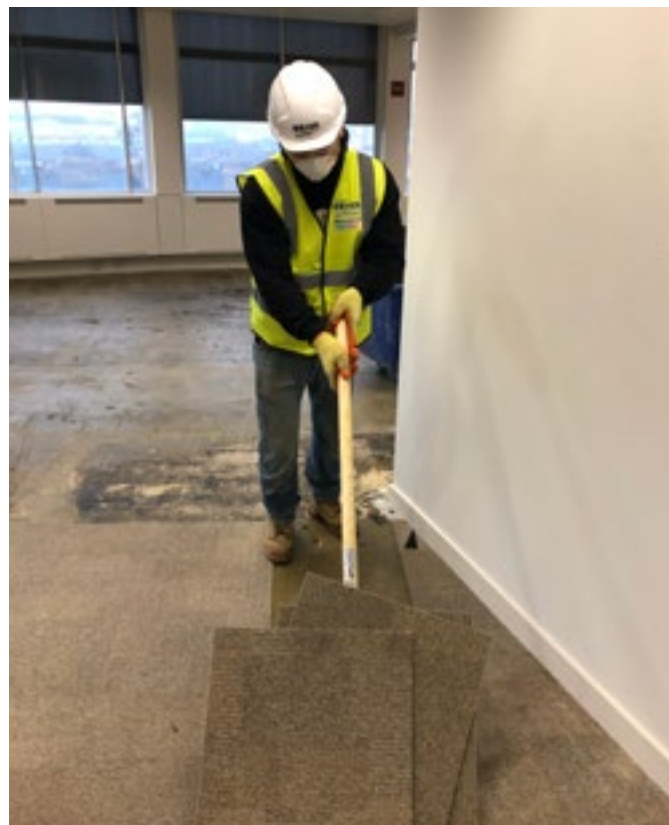
**Erith will commence enabling and early demolition works next month.**

The works are due to be completed by Autumn 2021.

Hoardings have now been erected around Space House. Other works over the coming weeks and months ahead include:

- ◆ Continuing internal 'soft strip' of the building.
- ◆ Erection of scaffolding around both buildings.
- ◆ Asbestos removal.
- ◆ Removal of the rooftop plant & equipment.
- ◆ Removal of windows.

There will be an increased number of vehicles entering and exiting the site to deliver materials and equipment for preparation of the works during this period.



The internal carpets of the building are being removed.

## WORKING HOURS

- ◆ **Monday to Friday:** 8.00am – 18.00pm (with any 'noisy works' restricted on a voluntary basis to the hours of 8.00am – 10.00am, 12.00pm – 14.00pm, 16.00pm – 18.00pm). This is in line with Camden Council's guidance.
- ◆ **Saturday:** 8.00am – 13.00pm.

## CONSTRUCTION ACCESS ROUTES

- ◆ Our primary route to and from the site will be via Kemble Street from Kingsway.
- ◆ Vehicles may also exit the site via Keeley Street though this will be dependent on the construction programme for 65 Kingsway.
- ◆ Traffic marshals will guide vehicles to and from the site and manage safety of pedestrians.
- ◆ No road closures are anticipated during the works except for the erection of the tower crane – details will be provided beforehand.

## GET IN TOUCH

If you have any queries on the construction programme, please do get in touch via:



[spacehouse@londoncommunications.co.uk](mailto:spacehouse@londoncommunications.co.uk)



0800 307 7965



[spacehouseproposals.co.uk](http://spacehouseproposals.co.uk)

**Erith's Community Liaison Officer, Fiona Ireland,** is based on site and will be pleased to provide any assistance required. She can be contacted by:

Email: [Fiona.Ireland@erith.com](mailto:Fiona.Ireland@erith.com)  
Call: 0370 950 8800 / 07407 813 683

**Erith's Project Manager, Pete Lilburn,** is based on site and will be pleased to provide any assistance required. He can be contacted by:

Email: [Pete.Lilburn@erith.com](mailto:Pete.Lilburn@erith.com)  
Call: 07785 455346